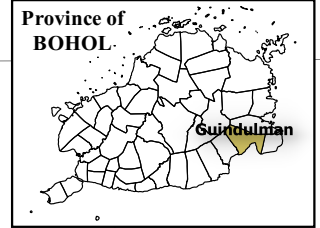


124°23'0" 124°25'0" 124°27'0" 124°29'0" 124°31'0"



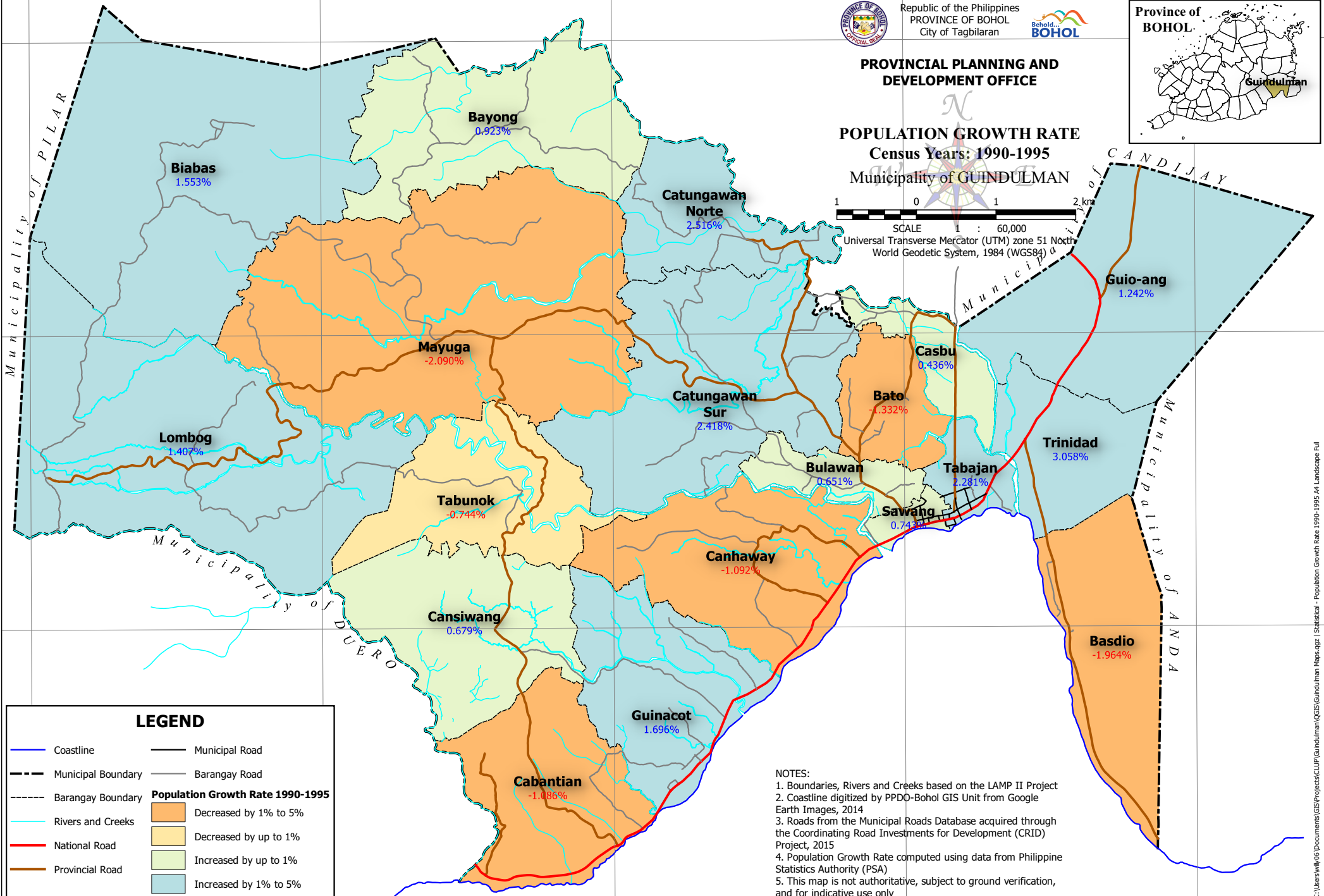
Republic of the Philippines  
PROVINCE OF BOHOL  
City of Tagbilaran



**PROVINCIAL PLANNING AND DEVELOPMENT OFFICE**

**POPULATION GROWTH RATE**  
Census Years: 1990-1995  
Municipality of GUINDULMAN

1 0 1 2 km  
SCALE 1 : 60,000  
Universal Transverse Mercator (UTM) zone 51 North  
World Geodetic System, 1984 (WGS84)



**LEGEND**

Coastline	Municipal Road
Municipal Boundary	Barangay Road
Barangay Boundary	<b>Population Growth Rate 1990-1995</b>
Rivers and Creeks	Decreased by 1% to 5%
National Road	Decreased by up to 1%
Provincial Road	Increased by up to 1%
	Increased by 1% to 5%

**NOTES:**  
 1. Boundaries, Rivers and Creeks based on the LAMP II Project  
 2. Coastline digitized by PPDO-Bohol GIS Unit from Google Earth Images, 2014  
 3. Roads from the Municipal Roads Database acquired through the Coordinating Road Investments for Development (CRID) Project, 2015  
 4. Population Growth Rate computed using data from Philippine Statistics Authority (PSA)  
 5. This map is not authoritative, subject to ground verification, and for indicative use only

124°23'0" 124°25'0" 124°27'0" 124°29'0" 124°31'0"